

Score

Σβαρνιάρια Καρακώστα, 1931

ΚΩΤΣΙΝΗΣ Γ.

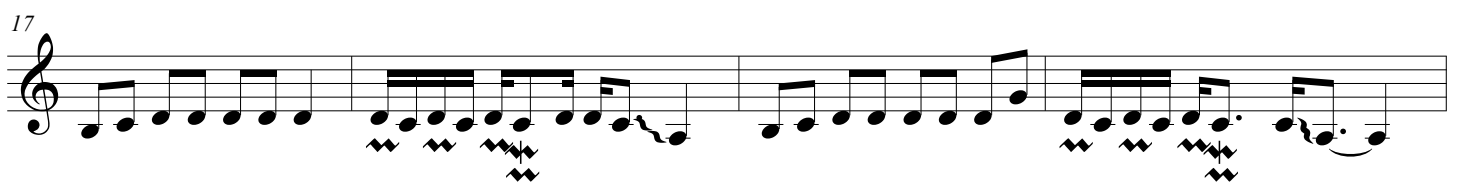
1η



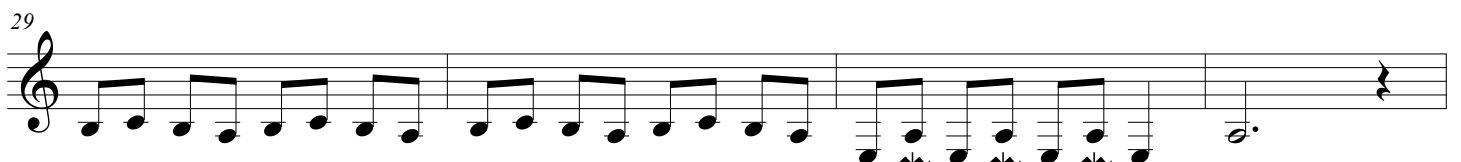
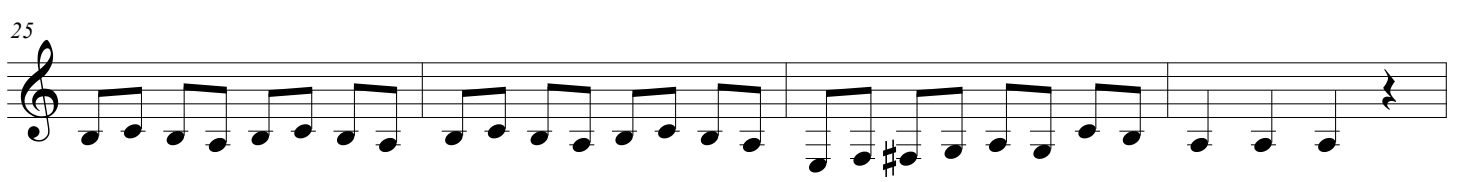
2η



3η



4η



5η

33

37

6η

41

45

7η

49

53

8η

57

61

65

69

73

77

81

85

Με το mib

89

93

9η (Λειψή)

97

Musical notation for the 9th measure of the piece "Λειψή" by Svarniaria Karakosta, 1931. The notation is on a single treble clef staff. It begins with a key signature of one flat (B-flat) and a common time signature. The first measure contains a series of eighth notes. The second measure features a triplet of eighth notes with an accent (>) and a fermata over the first note. The third measure consists of a quarter note followed by a half note. The fourth measure contains another triplet of eighth notes with an accent (>) and a fermata over the first note. The piece concludes with a double bar line.